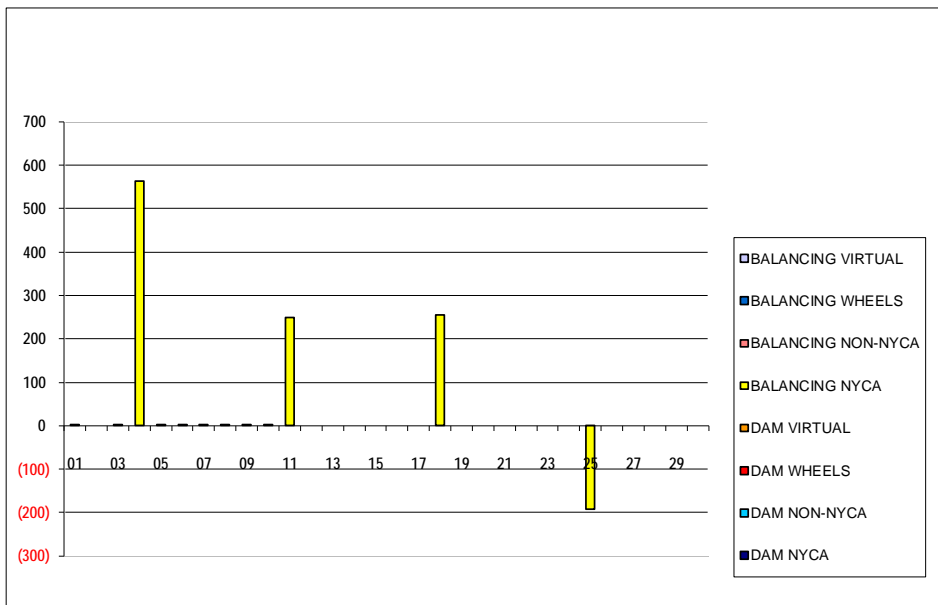


SETTLEMENTS REPORT  
 September 2020 Settlement Adjustment  
 October 7, 2020

Initial – Market Supply Delta Analysis

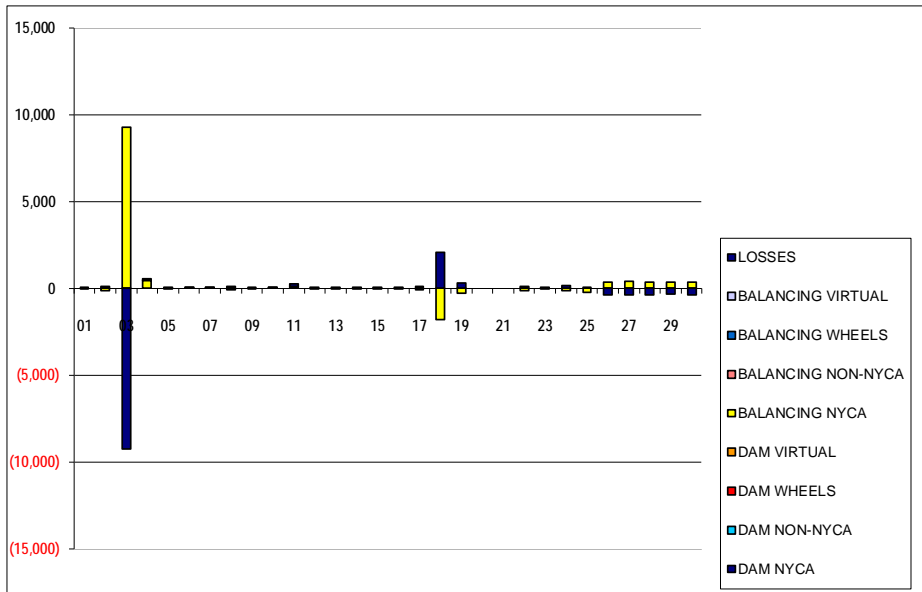
	MONDAY	TUESDAY	WEDNESDAY	THURSDAY	FRIDAY	SATURDAY	SUNDAY
		1	2	3	4	5	6
DAM NYCA		0	0	0	0	0	0
DAM NON-NYCA		0	0	0	0	0	0
DAM WHEELS		0	0	0	0	0	0
DAM VIRTUAL		0	0	0	0	0	0
BALANCING NYCA		2	0	1	563	1	0
BALANCING NON-NYCA		0	0	0	0	0	0
BALANCING WHEELS		0	0	0	0	0	0
BALANCING VIRTUAL		0	0	0	0	0	0
	7	8	9	10	11	12	13
DAM NYCA	0	0	0	0	0	0	0
DAM NON-NYCA	0	0	0	0	0	0	0
DAM WHEELS	0	0	0	0	0	0	0
DAM VIRTUAL	0	0	0	0	0	0	0
BALANCING NYCA	2	1	1	1	249	0	0
BALANCING NON-NYCA	0	0	0	0	0	0	0
BALANCING WHEELS	0	0	0	0	0	0	0
BALANCING VIRTUAL	0	0	0	0	0	0	0
	14	15	16	17	18	19	20
DAM NYCA	0	0	0	0	0	0	0
DAM NON-NYCA	0	0	0	0	0	0	0
DAM WHEELS	0	0	0	0	0	0	0
DAM VIRTUAL	0	0	0	0	0	0	0
BALANCING NYCA	0	0	0	0	254	0	0
BALANCING NON-NYCA	0	0	0	0	0	0	0
BALANCING WHEELS	0	0	0	0	0	0	0
BALANCING VIRTUAL	0	0	0	0	0	0	0
	21	22	23	24	25	26	27
DAM NYCA	0	0	0	0	0	0	0
DAM NON-NYCA	0	0	0	0	0	0	0
DAM WHEELS	0	0	0	0	0	0	0
DAM VIRTUAL	0	0	0	0	0	0	0
BALANCING NYCA	0	0	0	0	(192)	0	0
BALANCING NON-NYCA	0	0	0	0	0	0	0
BALANCING WHEELS	0	0	0	0	0	0	0
BALANCING VIRTUAL	0	0	0	0	0	0	0
	28	29	30				
DAM NYCA	0	0	0				
DAM NON-NYCA	0	0	0				
DAM WHEELS	0	0	0				
DAM VIRTUAL	0	0	0				
BALANCING NYCA	0	0	0				
BALANCING NON-NYCA	0	0	0				
BALANCING WHEELS	0	0	0				
BALANCING VIRTUAL	0	0	0				



SETTLEMENTS REPORT  
 September 2020 Settlement Adjustment  
 October 7, 2020

**Initial – Market Withdrawals Delta Analysis**

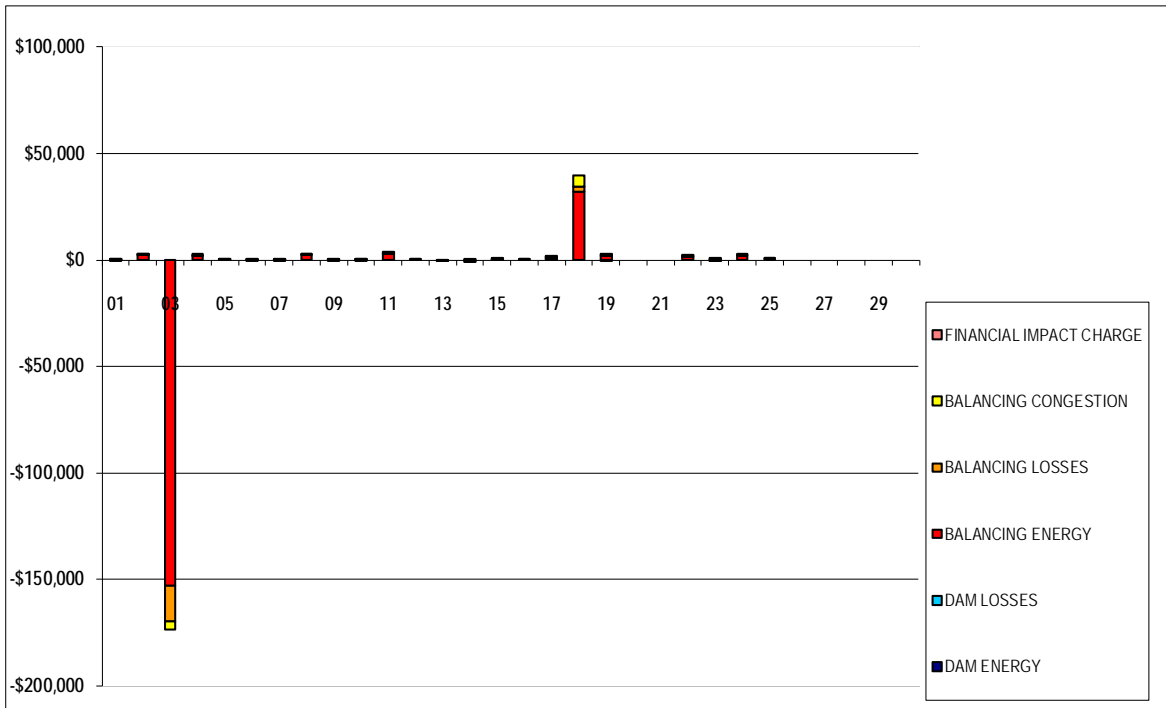
	MONDAY	TUESDAY	WEDNESDAY	THURSDAY	FRIDAY	SATURDAY	SUNDAY
		1	2	3	4	5	6
DAM NYCA		0	0	0	0	0	0
DAM NON-NYCA		0	0	0	0	0	0
DAM WHEELS		0	0	0	0	0	0
DAM VIRTUAL		0	0	0	0	0	0
BALANCING NYCA		2	(120)	9,267	450	1	0
BALANCING NON-NYCA		0	0	0	0	0	0
BALANCING WHEELS		0	0	0	0	0	0
BALANCING VIRTUAL		0	0	0	0	0	0
UFE/LOSSES		(0)	120	(9,266)	113	(0)	0
	7	8	9	10	11	12	13
DAM NYCA	0	0	0	0	0	0	0
DAM NON-NYCA	0	0	0	0	0	0	0
DAM WHEELS	0	0	0	0	0	0	0
DAM VIRTUAL	0	0	0	0	0	0	0
BALANCING NYCA	2	(110)	1	1	97	(8)	4
BALANCING NON-NYCA	0	0	0	0	0	0	0
BALANCING WHEELS	0	0	0	0	0	0	0
BALANCING VIRTUAL	0	0	0	0	0	0	0
UFE/LOSSES	0	111	(0)	0	152	8	(4)
	14	15	16	17	18	19	20
DAM NYCA	0	0	0	0	0	0	0
DAM NON-NYCA	0	0	0	0	0	0	0
DAM WHEELS	0	0	0	0	0	0	0
DAM VIRTUAL	0	0	0	0	0	0	0
BALANCING NYCA	24	(18)	(18)	(97)	(1,804)	(283)	0
BALANCING NON-NYCA	0	0	0	0	0	0	0
BALANCING WHEELS	0	0	0	0	0	0	0
BALANCING VIRTUAL	0	0	0	0	0	0	0
UFE/LOSSES	(24)	18	18	97	2,059	283	0
	21	22	23	24	25	26	27
DAM NYCA	0	0	0	0	0	0	0
DAM NON-NYCA	0	0	0	0	0	0	0
DAM WHEELS	0	0	0	0	0	0	0
DAM VIRTUAL	0	0	0	0	0	0	0
BALANCING NYCA	0	(123)	(14)	(137)	(220)	375	379
BALANCING NON-NYCA	0	0	0	0	0	0	0
BALANCING WHEELS	0	0	0	0	0	0	0
BALANCING VIRTUAL	0	0	0	0	0	0	0
UFE/LOSSES	0	123	14	137	28	(375)	(379)
	28	29	30				
DAM NYCA	0	0	0				
DAM NON-NYCA	0	0	0				
DAM WHEELS	0	0	0				
DAM VIRTUAL	0	0	0				
BALANCING NYCA	378	357	359				
BALANCING NON-NYCA	0	0	0				
BALANCING WHEELS	0	0	0				
BALANCING VIRTUAL	0	0	0				
UFE/LOSSES	(378)	(357)	(359)				



SETTLEMENTS REPORT  
September 2020 Settlement Adjustment  
October 7, 2020

Initial – Market Residuals Delta Analysis

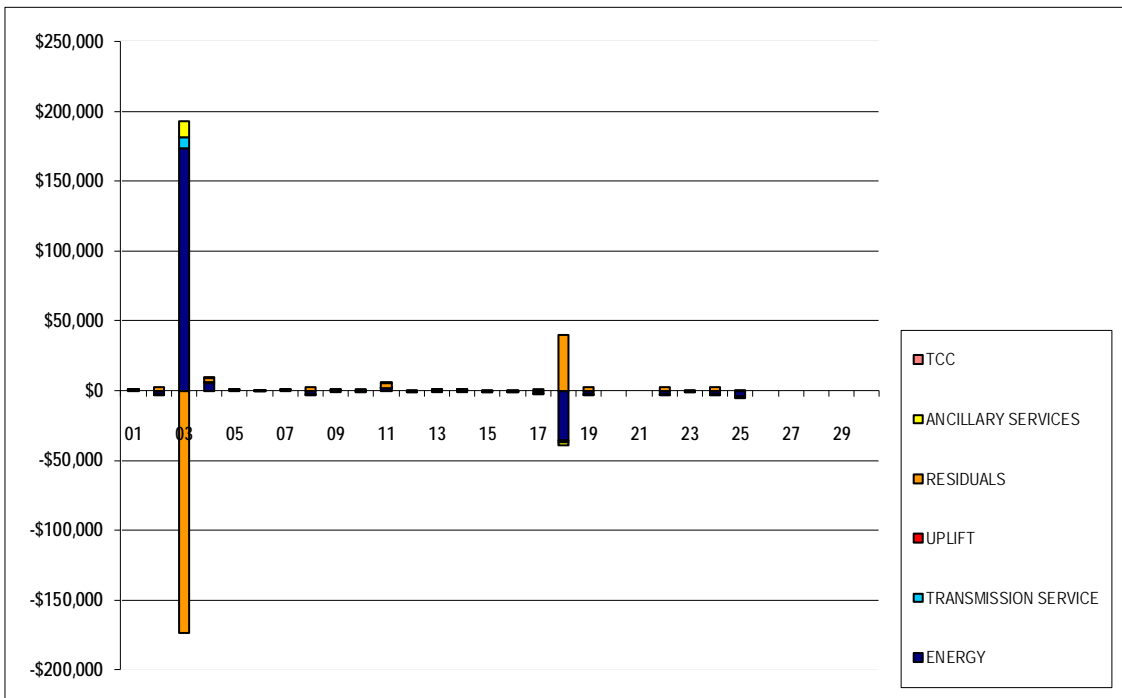
	MONDAY	TUESDAY	WEDNESDAY	THURSDAY	FRIDAY	SATURDAY	SUNDAY
		1	2	3	4	5	6
DAM ENERGY		(\$0.01)	\$0.00	\$0.00	\$0.00	\$0.00	\$0.00
DAM LOSSES		(\$0.01)	\$0.00	\$0.00	\$0.00	\$0.00	\$0.00
BALANCING ENERGY		\$0.08	\$2,209.44	(\$152,890.12)	\$1,675.92	\$2.79	\$1.21
BALANCING LOSSES		\$1.68	\$250.17	(\$16,982.10)	\$118.38	\$4.53	\$4.09
BALANCING CONGESTION		\$5.39	\$108.85	(\$3,988.47)	\$887.44	\$0.05	(\$5.11)
FINANCIAL IMPACT CHARGE		\$0.00	\$0.00	\$0.00	\$0.00	\$0.00	\$0.00
	7	8	9	10	11	12	13
DAM ENERGY	\$0.01	\$0.01	\$0.00	(\$0.01)	\$0.01	\$0.00	\$0.00
DAM LOSSES	\$0.00	\$0.01	(\$0.01)	\$0.00	\$0.01	\$0.01	\$0.00
BALANCING ENERGY	(\$0.07)	\$2,182.31	(\$6.84)	\$64.58	\$2,935.90	\$101.61	(\$19.76)
BALANCING LOSSES	\$6.09	\$222.86	\$0.86	\$15.55	\$336.86	\$11.18	\$0.01
BALANCING CONGESTION	\$0.39	\$191.87	\$1.12	\$195.70	\$174.26	\$1.08	(\$2.02)
FINANCIAL IMPACT CHARGE	\$0.00	\$0.00	\$0.00	(\$0.03)	\$0.00	\$0.00	\$0.00
	14	15	16	17	18	19	20
DAM ENERGY	\$0.00	\$0.01	\$0.00	(\$0.01)	\$0.00	(\$0.01)	\$0.00
DAM LOSSES	\$0.00	\$0.00	\$0.00	\$0.00	\$0.00	(\$0.01)	\$0.00
BALANCING ENERGY	(\$429.75)	\$227.44	\$157.36	\$1,170.71	\$31,896.13	\$2,114.66	\$0.00
BALANCING LOSSES	(\$40.63)	\$22.10	\$14.97	\$105.01	\$2,512.14	\$100.40	\$0.00
BALANCING CONGESTION	\$24.29	\$25.21	\$35.17	\$148.75	\$5,499.77	\$4.38	\$0.00
FINANCIAL IMPACT CHARGE	\$0.00	\$0.00	\$0.00	\$0.00	\$0.03	\$0.00	\$0.00
	21	22	23	24	25	26	27
DAM ENERGY	\$0.00	(\$0.01)	(\$0.01)	\$0.00	\$0.00	\$0.00	\$0.00
DAM LOSSES	\$0.00	\$0.00	(\$0.01)	\$0.00	\$0.00	\$0.00	\$0.00
BALANCING ENERGY	\$0.00	\$1,575.71	\$242.99	\$2,107.60	\$517.07	\$0.00	\$0.00
BALANCING LOSSES	\$0.00	\$128.35	\$14.46	\$195.83	\$42.06	\$0.00	\$0.00
BALANCING CONGESTION	\$0.00	\$702.37	(\$1.21)	\$29.26	\$3.14	\$0.00	\$0.00
FINANCIAL IMPACT CHARGE	\$0.00	\$0.00	\$0.00	\$0.00	\$0.00	\$0.00	\$0.00
	28	29	30				
DAM ENERGY	\$0.00	\$0.00	\$0.00				
DAM LOSSES	\$0.00	\$0.00	\$0.00				
BALANCING ENERGY	\$0.00	\$0.00	\$0.00				
BALANCING LOSSES	\$0.00	\$0.00	\$0.00				
BALANCING CONGESTION	\$0.00	\$0.00	\$0.00				
FINANCIAL IMPACT CHARGE	\$0.00	\$0.00	\$0.00				



SETTLEMENTS REPORT  
September 2020 Settlement Adjustment  
October 7, 2020

Initial – Market Costs Delta Analysis

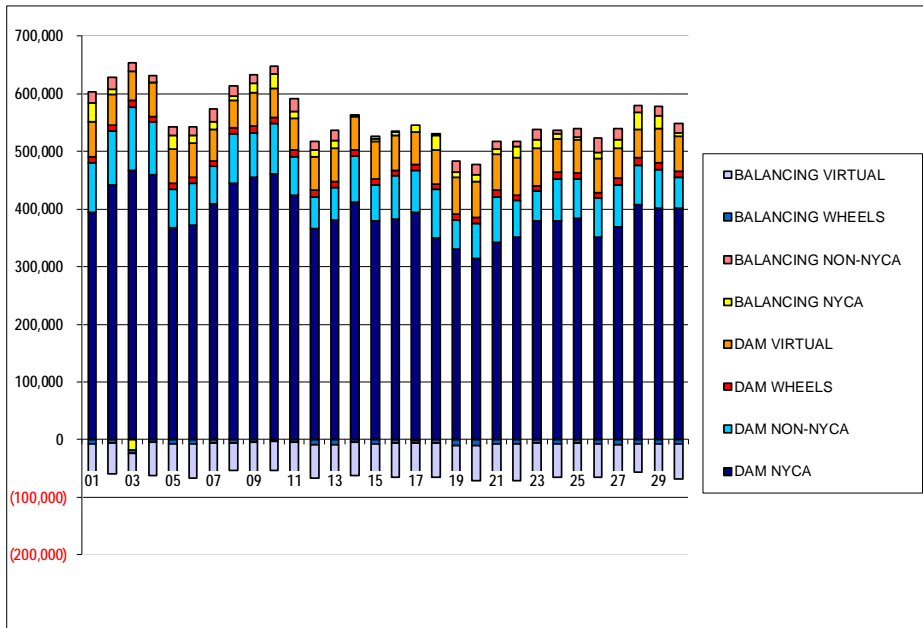
	MONDAY	TUESDAY	WEDNESDAY	THURSDAY	FRIDAY	SATURDAY	SUNDAY
		1	2	3	4	5	6
ENERGY		\$30.72	(\$2,568.58)	\$173,871.40	\$5,693.87	\$23.75	\$13.05
TRANSMISSION SERVICE		\$1.62	(\$101.04)	\$7,784.02	\$377.78	\$0.53	\$0.29
UPLIFT		\$0.00	\$0.01	(\$0.01)	\$0.00	\$0.00	\$0.00
RESIDUALS		\$7.13	\$2,568.46	(\$173,860.69)	\$2,681.74	\$7.37	\$0.19
ANCILLARY SERVICES		\$3.05	(\$152.05)	\$11,714.03	\$740.16	\$0.99	\$0.56
TCC		\$0.00	\$0.00	\$0.00	\$0.00	\$0.00	\$0.00
	7	8	9	10	11	12	13
ENERGY	\$28.85	(\$2,578.02)	\$24.49	(\$255.56)	\$1,569.32	(\$113.67)	\$21.78
TRANSMISSION SERVICE	\$1.88	(\$92.63)	\$0.76	\$0.69	\$81.61	(\$6.72)	\$3.36
UPLIFT	\$0.00	\$0.00	\$0.01	(\$0.01)	\$27.68	\$0.00	\$0.00
RESIDUALS	\$6.42	\$2,597.06	(\$4.87)	\$275.79	\$3,447.04	\$113.88	(\$21.77)
ANCILLARY SERVICES	\$3.53	(\$139.10)	\$1.39	\$1.31	\$762.40	(\$10.11)	\$5.07
TCC	\$0.00	\$0.00	\$0.00	\$0.00	\$0.00	\$0.00	\$0.00
	14	15	16	17	18	19	20
ENERGY	\$446.21	(\$274.72)	(\$207.53)	(\$1,424.36)	(\$35,762.42)	(\$2,219.40)	\$0.00
TRANSMISSION SERVICE	\$20.08	(\$15.12)	(\$15.13)	(\$81.32)	(\$1,515.45)	(\$237.72)	\$0.00
UPLIFT	\$3.42	\$0.00	\$0.01	\$0.00	\$0.00	\$0.01	\$0.00
RESIDUALS	(\$446.09)	\$274.76	\$207.50	\$1,424.46	\$39,908.07	\$2,219.42	\$0.00
ANCILLARY SERVICES	\$30.24	(\$22.74)	(\$22.76)	(\$122.36)	(\$2,202.94)	(\$357.72)	\$0.00
TCC	\$0.00	\$0.00	\$0.00	\$0.00	\$0.00	\$0.00	\$0.00
	21	22	23	24	25	26	27
ENERGY	\$0.00	(\$2,406.54)	(\$256.39)	(\$2,332.46)	(\$4,184.77)	\$0.00	\$0.00
TRANSMISSION SERVICE	\$0.00	(\$103.68)	(\$11.88)	(\$114.81)	(\$185.00)	\$0.00	\$0.00
UPLIFT	\$0.00	\$0.00	(\$0.02)	\$0.02	\$0.01	\$0.00	\$0.00
RESIDUALS	\$0.00	\$2,406.42	\$256.22	\$2,332.69	\$562.27	\$0.00	\$0.00
ANCILLARY SERVICES	\$0.00	(\$156.03)	(\$17.89)	(\$172.76)	(\$323.82)	\$0.00	\$0.00
TCC	\$0.00	\$0.00	\$0.00	\$0.00	\$0.00	\$0.00	\$0.00
	28	29	30				
ENERGY	\$0.00	\$0.00	\$0.00				
TRANSMISSION SERVICE	\$0.00	\$0.00	\$0.00				
UPLIFT	\$0.00	\$0.00	\$0.00				
RESIDUALS	\$0.00	\$0.00	\$0.00				
ANCILLARY SERVICES	\$0.00	\$0.00	\$0.00				
TCC	\$0.00	\$0.00	\$0.00				



SETTLEMENTS REPORT  
September 2020 Settlement Adjustment  
October 7, 2020

Weekly Settlement – Market Supply Analysis

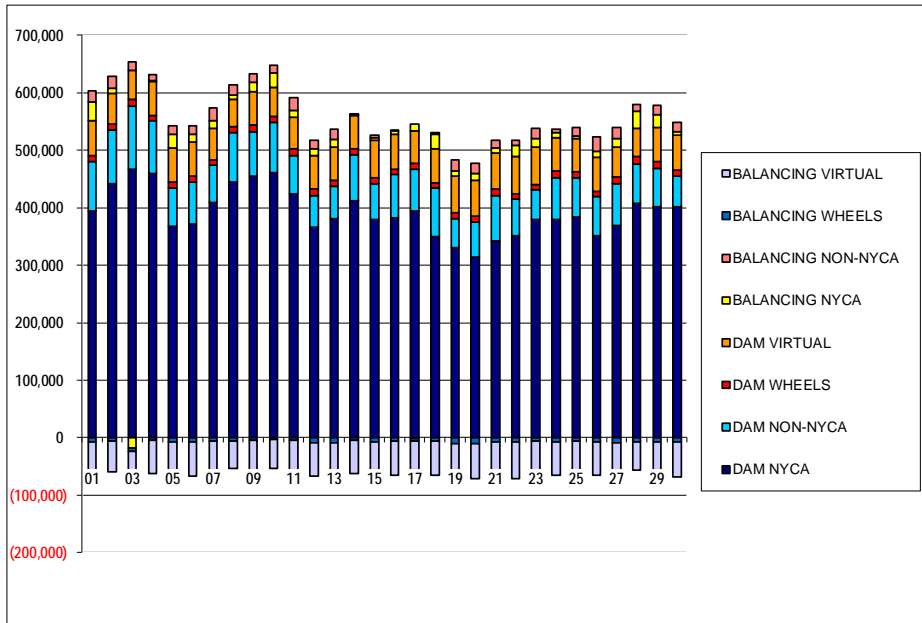
	MONDAY	TUESDAY	WEDNESDAY	THURSDAY	FRIDAY	SATURDAY	SUNDAY
		1	2	3	4	5	6
DAM NYCA		393,865	442,093	466,578	459,000	367,688	372,654
DAM NON-NYCA		85,662	92,446	110,072	91,822	66,549	71,994
DAM WHEELS		11,000	10,474	11,337	9,855	10,907	10,504
DAM VIRTUAL		61,182	53,725	51,219	58,446	59,538	58,526
BALANCING NYCA		32,364	8,619	(17,953)	842	23,388	14,159
BALANCING NON-NYCA		18,630	20,964	14,460	11,186	14,979	15,179
BALANCING WHEELS		(7,621)	(6,078)	(5,556)	(4,276)	(8,062)	(8,218)
BALANCING VIRTUAL		(61,182)	(53,725)	(51,219)	(58,446)	(59,538)	(58,526)
	7	8	9	10	11	12	13
DAM NYCA	408,926	444,513	454,323	460,782	423,223	365,404	380,170
DAM NON-NYCA	65,374	85,407	78,242	87,753	67,338	55,044	57,525
DAM WHEELS	9,556	11,633	11,299	10,711	11,176	13,031	10,488
DAM VIRTUAL	53,878	47,543	57,618	50,166	56,317	57,777	57,951
BALANCING NYCA	13,290	7,438	16,028	24,524	10,765	10,881	12,244
BALANCING NON-NYCA	22,352	16,722	15,995	13,550	22,054	14,770	17,781
BALANCING WHEELS	(5,681)	(5,835)	(4,910)	(3,511)	(5,066)	(9,083)	(8,418)
BALANCING VIRTUAL	(53,878)	(47,543)	(57,618)	(50,166)	(56,317)	(57,777)	(57,951)
	14	15	16	17	18	19	20
DAM NYCA	412,526	380,162	382,134	394,833	349,401	329,905	313,734
DAM NON-NYCA	79,392	61,315	76,321	72,169	84,148	50,804	60,734
DAM WHEELS	10,650	10,524	8,958	10,286	10,298	10,461	11,540
DAM VIRTUAL	57,410	65,395	60,254	55,655	59,349	64,168	61,043
BALANCING NYCA	2,139	4,451	5,868	12,573	23,867	8,609	12,961
BALANCING NON-NYCA	1,840	4,091	1,592	(950)	3,984	18,736	17,676
BALANCING WHEELS	(4,878)	(7,200)	(5,694)	(4,796)	(6,219)	(9,782)	(9,755)
BALANCING VIRTUAL	(57,410)	(65,395)	(60,254)	(55,655)	(59,349)	(64,168)	(61,043)
	21	22	23	24	25	26	27
DAM NYCA	341,726	351,645	379,141	378,911	383,691	350,620	368,766
DAM NON-NYCA	79,579	63,321	51,675	73,717	68,065	68,329	73,175
DAM WHEELS	11,637	9,557	9,952	10,803	10,288	9,719	10,964
DAM VIRTUAL	61,772	64,588	65,295	58,520	57,537	58,364	52,806
BALANCING NYCA	8,951	19,207	13,837	8,679	4,705	11,478	14,728
BALANCING NON-NYCA	13,428	9,499	17,713	6,548	15,420	25,407	18,499
BALANCING WHEELS	(7,651)	(6,784)	(6,198)	(6,779)	(5,878)	(7,102)	(8,384)
BALANCING VIRTUAL	(61,772)	(64,588)	(65,295)	(58,520)	(57,537)	(58,364)	(52,806)
	28	29	30				
DAM NYCA	406,956	401,992	402,134				
DAM NON-NYCA	69,447	66,709	53,028				
DAM WHEELS	12,381	10,826	10,045				
DAM VIRTUAL	49,396	60,473	61,483				
BALANCING NYCA	29,470	21,556	5,653				
BALANCING NON-NYCA	11,218	17,012	15,840				
BALANCING WHEELS	(7,461)	(6,766)	(6,808)				
BALANCING VIRTUAL	(49,396)	(60,473)	(61,483)				



SETTLEMENTS REPORT  
September 2020 Settlement Adjustment  
October 7, 2020

Initial Settlement Adjustment – Market Supply Analysis

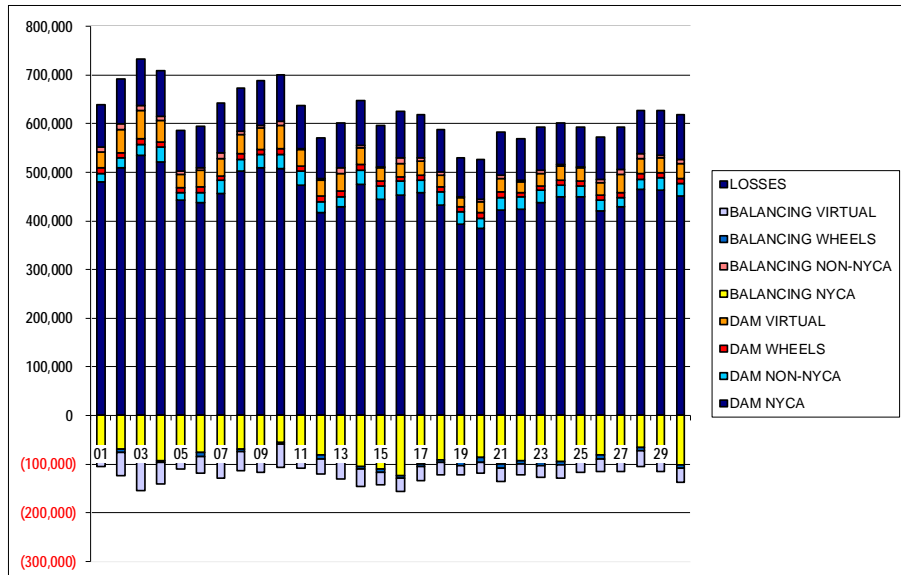
	MONDAY	TUESDAY	WEDNESDAY	THURSDAY	FRIDAY	SATURDAY	SUNDAY
		1	2	3	4	5	6
DAM NYCA		393,865	442,093	466,578	459,000	367,688	372,654
DAM NON-NYCA		85,662	92,446	110,072	91,822	66,549	71,994
DAM WHEELS		11,000	10,474	11,337	9,855	10,907	10,504
DAM VIRTUAL		61,182	53,725	51,219	58,446	59,538	58,526
BALANCING NYCA		32,366	8,619	(17,952)	1,405	23,389	14,159
BALANCING NON-NYCA		18,630	20,964	14,460	11,186	14,979	15,179
BALANCING WHEELS		(7,621)	(6,078)	(5,556)	(4,276)	(8,062)	(8,218)
BALANCING VIRTUAL		(61,182)	(53,725)	(51,219)	(58,446)	(59,538)	(58,526)
	7	8	9	10	11	12	13
DAM NYCA	408,926	444,513	454,323	460,782	423,223	365,404	380,170
DAM NON-NYCA	65,374	85,407	78,242	87,753	67,338	55,044	57,525
DAM WHEELS	9,556	11,633	11,299	10,711	11,176	13,031	10,488
DAM VIRTUAL	53,878	47,543	57,618	50,166	56,317	57,777	57,951
BALANCING NYCA	13,292	7,438	16,028	24,525	11,014	10,881	12,244
BALANCING NON-NYCA	22,352	16,722	15,995	13,550	22,054	14,770	17,781
BALANCING WHEELS	(5,681)	(5,835)	(4,910)	(3,511)	(5,066)	(9,083)	(8,418)
BALANCING VIRTUAL	(53,878)	(47,543)	(57,618)	(50,166)	(56,317)	(57,777)	(57,951)
	14	15	16	17	18	19	20
DAM NYCA	412,526	380,162	382,134	394,833	349,401	329,905	313,734
DAM NON-NYCA	79,392	61,315	76,321	72,169	84,148	50,804	60,734
DAM WHEELS	10,650	10,524	8,958	10,286	10,298	10,461	11,540
DAM VIRTUAL	57,410	65,395	60,254	55,655	59,349	64,168	61,043
BALANCING NYCA	2,139	4,451	5,868	12,573	24,121	8,609	12,961
BALANCING NON-NYCA	1,840	4,091	1,592	(950)	3,984	18,736	17,676
BALANCING WHEELS	(4,878)	(7,200)	(5,694)	(4,796)	(6,219)	(9,782)	(9,755)
BALANCING VIRTUAL	(57,410)	(65,395)	(60,254)	(55,655)	(59,349)	(64,168)	(61,043)
	21	22	23	24	25	26	27
DAM NYCA	341,726	351,645	379,141	378,911	383,691	350,620	368,766
DAM NON-NYCA	79,579	63,321	51,675	73,717	68,065	68,329	73,175
DAM WHEELS	11,637	9,557	9,952	10,803	10,288	9,719	10,964
DAM VIRTUAL	61,772	64,588	65,295	58,520	57,537	58,364	52,806
BALANCING NYCA	8,951	19,207	13,837	8,679	4,513	11,478	14,728
BALANCING NON-NYCA	13,428	9,499	17,713	6,548	15,420	25,407	18,499
BALANCING WHEELS	(7,651)	(6,784)	(6,198)	(6,779)	(5,878)	(7,102)	(8,384)
BALANCING VIRTUAL	(61,772)	(64,588)	(65,295)	(58,520)	(57,537)	(58,364)	(52,806)
	28	29	30				
DAM NYCA	406,956	401,992	402,134				
DAM NON-NYCA	69,447	66,709	53,028				
DAM WHEELS	12,381	10,826	10,045				
DAM VIRTUAL	49,396	60,473	61,483				
BALANCING NYCA	29,470	21,556	5,653				
BALANCING NON-NYCA	11,218	17,012	15,840				
BALANCING WHEELS	(7,461)	(6,766)	(6,808)				
BALANCING VIRTUAL	(49,396)	(60,473)	(61,483)				



SETTLEMENTS REPORT  
September 2020 Settlement Adjustment  
October 7, 2020

Weekly Settlement – Market Withdrawals Analysis

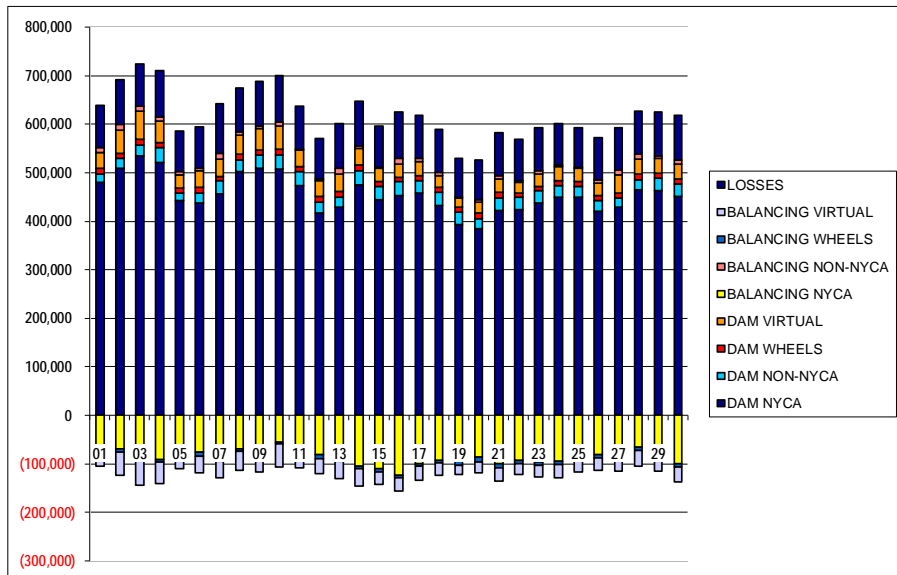
	MONDAY	TUESDAY	WEDNESDAY	THURSDAY	FRIDAY	SATURDAY	SUNDAY
		1	2	3	4	5	6
DAM NYCA		480,837	508,560	534,547	521,933	441,976	437,388
DAM NON-NYCA		16,946	21,227	22,828	29,579	16,273	21,304
DAM WHEELS		11,000	10,474	11,337	9,855	10,907	10,504
DAM VIRTUAL		32,932	47,478	58,828	44,646	25,731	34,309
BALANCING NYCA		(63,767)	(69,719)	(89,968)	(92,373)	(76,156)	(75,468)
BALANCING NON-NYCA		10,983	12,684	10,469	9,892	7,268	5,030
BALANCING WHEELS		(7,621)	(6,078)	(5,556)	(4,276)	(8,062)	(8,218)
BALANCING VIRTUAL		(32,932)	(47,478)	(58,828)	(44,646)	(25,731)	(34,309)
UFE/LOSSES		85,521	91,370	95,282	93,820	83,243	85,733
	7	8	9	10	11	12	13
DAM NYCA	455,766	502,568	509,497	507,681	473,650	417,269	428,260
DAM NON-NYCA	27,683	24,127	26,582	29,402	28,340	21,406	22,006
DAM WHEELS	9,556	11,633	11,299	10,711	11,176	13,031	10,488
DAM VIRTUAL	34,590	39,811	43,305	48,736	34,071	31,334	36,526
BALANCING NYCA	(89,052)	(68,382)	(69,242)	(54,920)	(69,303)	(80,399)	(86,406)
BALANCING NON-NYCA	13,184	6,512	6,345	7,613	1,096	4,290	11,998
BALANCING WHEELS	(5,681)	(5,835)	(4,910)	(3,511)	(5,066)	(9,083)	(8,418)
BALANCING VIRTUAL	(34,590)	(39,811)	(43,305)	(48,736)	(34,071)	(31,334)	(36,526)
UFE/LOSSES	102,362	89,255	91,406	96,832	89,596	83,533	91,861
	14	15	16	17	18	19	20
DAM NYCA	474,893	443,681	453,425	458,207	432,553	393,636	384,544
DAM NON-NYCA	29,828	28,411	28,016	25,317	26,853	25,292	21,261
DAM WHEELS	10,650	10,524	8,958	10,286	10,298	10,461	11,540
DAM VIRTUAL	34,837	26,299	27,709	29,446	24,820	18,476	22,144
BALANCING NYCA	(105,436)	(109,414)	(123,378)	(99,404)	(90,644)	(93,208)	(86,905)
BALANCING NON-NYCA	4,370	1,528	11,929	6,187	5,427	879	5,076
BALANCING WHEELS	(4,878)	(7,200)	(5,694)	(4,796)	(6,219)	(9,782)	(9,755)
BALANCING VIRTUAL	(34,837)	(26,299)	(27,709)	(29,446)	(24,820)	(18,476)	(22,144)
UFE/LOSSES	92,242	85,813	95,923	88,318	87,211	81,455	81,129
	21	22	23	24	25	26	27
DAM NYCA	421,533	423,226	436,844	449,890	449,260	420,868	429,273
DAM NON-NYCA	25,953	25,676	25,780	23,538	22,477	21,620	17,832
DAM WHEELS	11,637	9,557	9,952	10,803	10,288	9,719	10,964
DAM VIRTUAL	27,395	22,155	24,974	28,445	28,037	25,866	37,519
BALANCING NYCA	(99,936)	(93,017)	(96,357)	(94,363)	(83,016)	(81,705)	(68,993)
BALANCING NON-NYCA	6,682	3,526	7,318	3,733	1,370	7,891	10,642
BALANCING WHEELS	(7,651)	(6,784)	(6,198)	(6,779)	(5,878)	(7,102)	(8,384)
BALANCING VIRTUAL	(27,395)	(22,155)	(24,974)	(28,445)	(28,037)	(25,866)	(37,519)
UFE/LOSSES	89,450	84,261	88,780	85,056	81,791	87,159	86,414
	28	29	30				
DAM NYCA	465,184	462,414	451,701				
DAM NON-NYCA	19,483	26,407	25,116				
DAM WHEELS	12,381	10,826	10,045				
DAM VIRTUAL	31,774	30,678	30,562				
BALANCING NYCA	(65,365)	(77,432)	(100,774)				
BALANCING NON-NYCA	9,568	5,270	8,263				
BALANCING WHEELS	(7,461)	(6,766)	(6,808)				
BALANCING VIRTUAL	(31,774)	(30,678)	(30,562)				
UFE/LOSSES	88,220	90,611	92,350				



SETTLEMENTS REPORT  
September 2020 Settlement Adjustment  
October 7, 2020

Initial Settlement Adjustment – Market Withdrawals Analysis

	MONDAY	TUESDAY	WEDNESDAY	THURSDAY	FRIDAY	SATURDAY	SUNDAY
		1	2	3	4	5	6
DAM NYCA		480,837	508,560	534,547	521,933	441,976	437,388
DAM NON-NYCA		16,946	21,227	22,828	29,579	16,273	21,304
DAM WHEELS		11,000	10,474	11,337	9,855	10,907	10,504
DAM VIRTUAL		32,932	47,478	58,828	44,646	25,731	34,309
BALANCING NYCA		(63,765)	(69,839)	(80,702)	(91,924)	(76,155)	(75,468)
BALANCING NON-NYCA		10,983	12,684	10,469	9,892	7,268	5,030
BALANCING WHEELS		(7,621)	(6,078)	(5,556)	(4,276)	(8,062)	(8,218)
BALANCING VIRTUAL		(32,932)	(47,478)	(58,828)	(44,646)	(25,731)	(34,309)
UFELOSSES		85,521	91,490	86,016	93,933	83,243	85,733
	7	8	9	10	11	12	13
DAM NYCA	455,766	502,568	509,497	507,681	473,650	417,269	428,260
DAM NON-NYCA	27,683	24,127	26,582	29,402	28,340	21,406	22,006
DAM WHEELS	9,556	11,633	11,299	10,711	11,176	13,031	10,488
DAM VIRTUAL	34,590	39,811	43,305	48,736	34,071	31,334	36,526
BALANCING NYCA	(89,050)	(68,493)	(69,242)	(54,919)	(69,205)	(80,407)	(86,402)
BALANCING NON-NYCA	13,184	6,512	6,345	7,613	1,096	4,290	11,998
BALANCING WHEELS	(5,681)	(5,835)	(4,910)	(3,511)	(5,066)	(9,083)	(8,418)
BALANCING VIRTUAL	(34,590)	(39,811)	(43,305)	(48,736)	(34,071)	(31,334)	(36,526)
UFELOSSES	102,362	89,366	91,406	96,832	89,748	83,541	91,857
	14	15	16	17	18	19	20
DAM NYCA	474,893	443,681	453,425	458,207	432,553	393,636	384,544
DAM NON-NYCA	29,828	28,411	28,016	25,317	26,853	25,292	21,261
DAM WHEELS	10,650	10,524	8,958	10,286	10,298	10,461	11,540
DAM VIRTUAL	34,837	26,299	27,709	29,446	24,820	18,476	22,144
BALANCING NYCA	(105,412)	(109,432)	(123,396)	(99,501)	(92,449)	(93,491)	(86,905)
BALANCING NON-NYCA	4,370	1,528	11,929	6,187	5,427	879	5,076
BALANCING WHEELS	(4,878)	(7,200)	(5,694)	(4,796)	(6,219)	(9,782)	(9,755)
BALANCING VIRTUAL	(34,837)	(26,299)	(27,709)	(29,446)	(24,820)	(18,476)	(22,144)
UFELOSSES	92,218	85,831	95,941	88,415	89,269	81,738	81,129
	21	22	23	24	25	26	27
DAM NYCA	421,533	423,226	436,844	449,890	449,260	420,868	429,273
DAM NON-NYCA	25,953	25,676	25,780	23,538	22,477	21,620	17,832
DAM WHEELS	11,637	9,557	9,952	10,803	10,288	9,719	10,964
DAM VIRTUAL	27,395	22,155	24,974	28,445	28,037	25,866	37,519
BALANCING NYCA	(99,936)	(93,140)	(96,371)	(94,499)	(83,237)	(81,329)	(68,614)
BALANCING NON-NYCA	6,682	3,526	7,318	3,733	1,370	7,891	10,642
BALANCING WHEELS	(7,651)	(6,784)	(6,198)	(6,779)	(5,878)	(7,102)	(8,384)
BALANCING VIRTUAL	(27,395)	(22,155)	(24,974)	(28,445)	(28,037)	(25,866)	(37,519)
UFELOSSES	89,450	84,385	88,794	85,192	81,819	86,783	86,035
	28	29	30				
DAM NYCA	465,184	462,414	451,701				
DAM NON-NYCA	19,483	26,407	25,116				
DAM WHEELS	12,381	10,826	10,045				
DAM VIRTUAL	31,774	30,678	30,562				
BALANCING NYCA	(64,987)	(77,074)	(100,416)				
BALANCING NON-NYCA	9,568	5,270	8,263				
BALANCING WHEELS	(7,461)	(6,766)	(6,808)				
BALANCING VIRTUAL	(31,774)	(30,678)	(30,562)				
UFELOSSES	87,843	90,253	91,991				

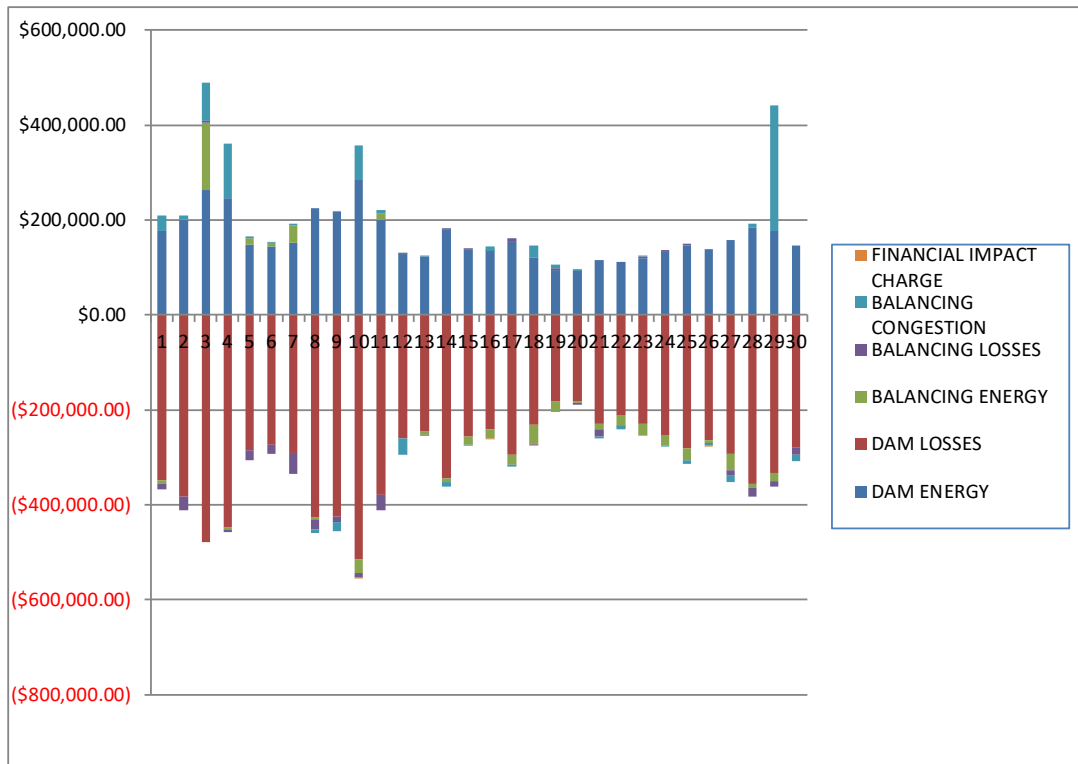




SETTLEMENTS REPORT  
September 2020 Settlement Adjustment  
October 7, 2020

Weekly Settlement – Market Residuals Analysis

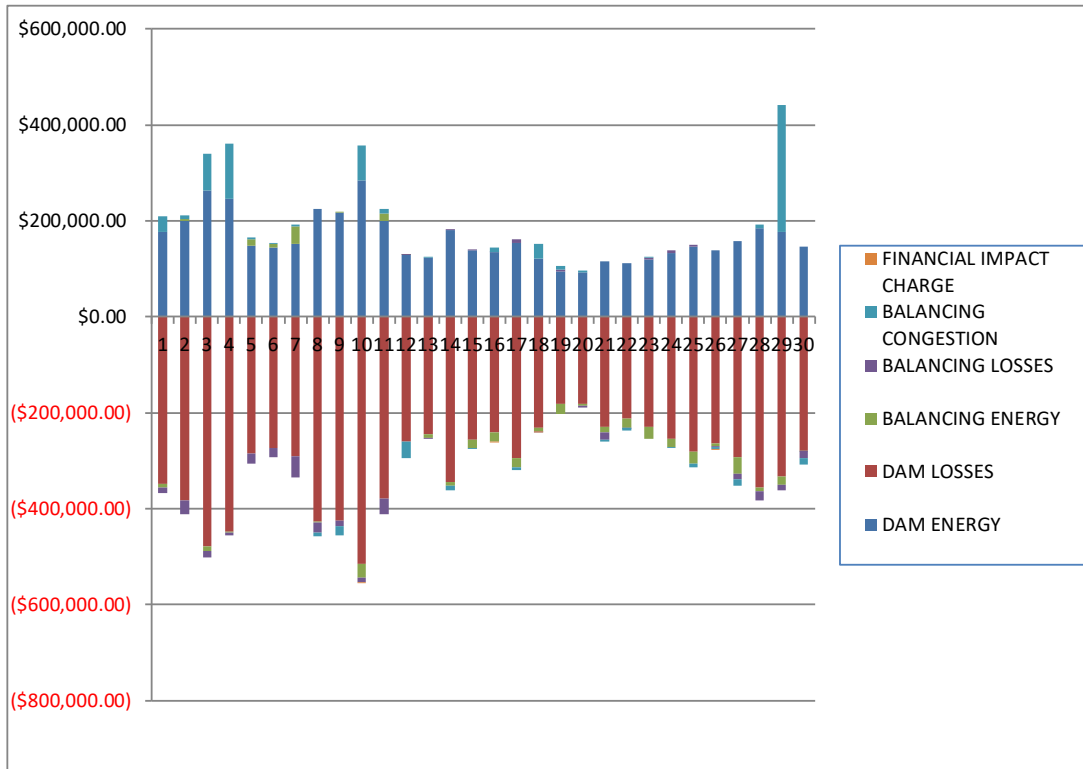
	MONDAY	TUESDAY	WEDNESDAY	THURSDAY	FRIDAY	SATURDAY	SUNDAY
		1	2	3	4	5	6
DAM ENERGY		\$176,854.05	\$200,055.88	\$262,666.69	\$245,290.00	\$147,697.12	\$144,450.61
DAM LOSSES		(\$348,819.32)	(\$383,090.52)	(\$477,651.28)	(\$448,221.51)	(\$285,126.20)	(\$272,730.91)
BALANCING ENERGY		(\$6,360.28)	\$1,784.34	\$143,231.00	(\$2,564.35)	\$13,427.25	\$6,685.96
BALANCING LOSSES		(\$12,153.51)	(\$28,304.32)	\$2,257.03	(\$7,064.13)	(\$21,000.36)	(\$19,729.28)
BALANCING CONGESTION		\$32,941.97	\$8,046.20	\$80,710.92	\$114,768.01	\$3,410.66	\$2,359.76
FINANCIAL IMPACT CHARGE		\$0.00	\$0.00	\$0.00	\$0.00	\$0.00	\$0.00
	7	8	9	10	11	12	13
DAM ENERGY	\$152,780.74	\$225,777.44	\$217,917.61	\$283,336.60	\$199,327.86	\$128,334.92	\$123,786.01
DAM LOSSES	(\$291,143.40)	(\$426,904.12)	(\$425,003.16)	(\$514,323.88)	(\$379,338.69)	(\$260,374.69)	(\$245,451.62)
BALANCING ENERGY	\$36,155.24	(\$4,074.10)	\$115.46	(\$29,060.96)	\$13,228.56	\$1,141.12	(\$5,964.02)
BALANCING LOSSES	(\$42,684.21)	(\$20,754.68)	(\$12,010.45)	(\$9,231.88)	(\$31,472.90)	\$1,952.35	(\$1,841.39)
BALANCING CONGESTION	\$2,925.36	(\$7,937.26)	(\$18,521.14)	\$74,069.70	\$8,394.92	(\$33,381.05)	\$1,615.48
FINANCIAL IMPACT CHARGE	\$0.00	\$0.00	\$0.00	(\$1,596.33)	\$0.00	\$0.00	\$0.00
	14	15	16	17	18	19	20
DAM ENERGY	\$179,873.22	\$138,947.05	\$134,865.64	\$153,594.72	\$121,932.83	\$93,907.66	\$91,760.42
DAM LOSSES	(\$344,515.02)	(\$255,863.84)	(\$241,314.87)	(\$294,152.06)	(\$230,658.19)	(\$181,147.88)	(\$180,535.58)
BALANCING ENERGY	(\$7,590.44)	(\$17,403.49)	(\$19,535.59)	(\$20,602.13)	(\$40,034.94)	(\$24,008.56)	(\$4,510.32)
BALANCING LOSSES	\$936.61	\$12.41	\$225.83	\$7,353.46	(\$3,007.90)	\$4,981.56	(\$3,281.82)
BALANCING CONGESTION	(\$9,042.03)	(\$186.61)	\$8,986.67	(\$5,037.09)	\$23,839.67	\$7,745.57	\$5,138.52
FINANCIAL IMPACT CHARGE	\$0.00	\$0.00	(\$97.09)	\$0.00	(\$275.99)	\$0.00	\$0.00
	21	22	23	24	25	26	27
DAM ENERGY	\$116,030.67	\$111,292.32	\$120,061.61	\$133,435.65	\$145,900.10	\$138,269.56	\$157,864.18
DAM LOSSES	(\$228,753.23)	(\$211,779.01)	(\$230,017.30)	(\$254,462.69)	(\$281,694.42)	(\$263,933.46)	(\$291,877.32)
BALANCING ENERGY	(\$12,896.81)	(\$20,517.72)	(\$24,710.78)	(\$20,050.10)	(\$24,557.02)	(\$5,849.41)	(\$34,269.82)
BALANCING LOSSES	(\$14,278.74)	(\$282.54)	\$2,332.82	\$4,123.80	\$3,711.45	(\$2,539.10)	(\$11,637.04)
BALANCING CONGESTION	(\$4,272.52)	(\$7,359.34)	\$2,684.81	(\$255.89)	(\$7,645.47)	(\$3,133.04)	(\$13,776.17)
FINANCIAL IMPACT CHARGE	\$0.00	\$0.00	\$0.00	\$0.00	\$0.00	(\$571.62)	\$0.00
	28	29	30				
DAM ENERGY	\$184,112.78	\$177,682.99	\$146,641.22				
DAM LOSSES	(\$356,696.69)	(\$332,419.87)	(\$279,079.93)				
BALANCING ENERGY	(\$7,455.83)	(\$18,143.98)	(\$539.09)				
BALANCING LOSSES	(\$18,649.37)	(\$10,460.30)	(\$13,887.94)				
BALANCING CONGESTION	\$8,623.64	\$263,330.10	(\$14,196.23)				
FINANCIAL IMPACT CHARGE	\$0.00	\$0.00	\$0.00				



SETTLEMENTS REPORT  
September 2020 Settlement Adjustment  
October 7, 2020

Initial Settlement Adjustment – Market Residuals Analysis

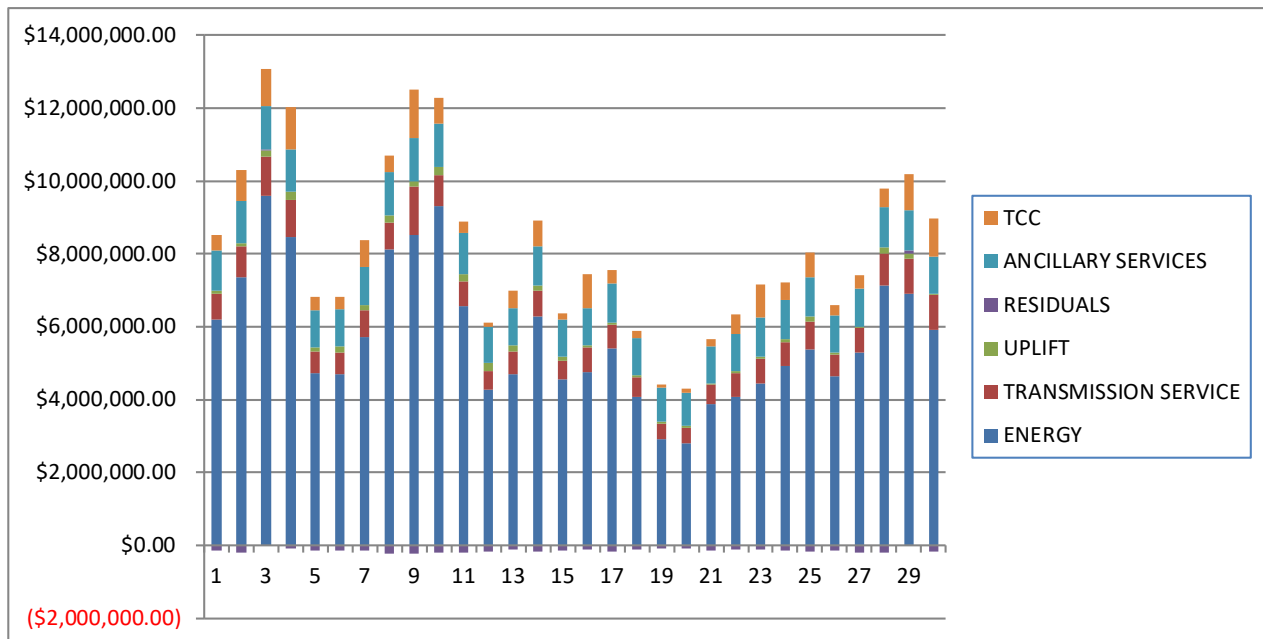
	MONDAY	TUESDAY	WEDNESDAY	THURSDAY	FRIDAY	SATURDAY	SUNDAY
		1	2	3	4	5	6
DAM ENERGY		\$176,854.04	\$200,055.88	\$262,666.69	\$245,290.00	\$147,697.12	\$144,450.61
DAM LOSSES		(\$348,819.33)	(\$383,090.52)	(\$477,651.28)	(\$448,221.51)	(\$285,126.20)	(\$272,730.91)
BALANCING ENERGY		(\$6,360.20)	\$3,993.78	(\$9,659.12)	(\$888.43)	\$13,430.04	\$6,687.17
BALANCING LOSSES		(\$12,151.83)	(\$28,054.15)	(\$14,725.07)	(\$6,945.75)	(\$20,995.83)	(\$19,725.19)
BALANCING CONGESTION		\$32,947.36	\$8,155.05	\$76,722.45	\$115,655.45	\$3,410.71	\$2,354.65
FINANCIAL IMPACT CHARGE		\$0.00	\$0.00	\$0.00	\$0.00	\$0.00	\$0.00
	7	8	9	10	11	12	13
DAM ENERGY	\$152,780.75	\$225,777.45	\$217,917.61	\$283,336.59	\$199,327.87	\$128,334.92	\$123,786.01
DAM LOSSES	(\$291,143.40)	(\$426,904.11)	(\$425,003.17)	(\$514,323.88)	(\$379,338.68)	(\$260,374.68)	(\$245,451.62)
BALANCING ENERGY	\$36,155.17	(\$1,891.79)	\$108.62	(\$28,996.38)	\$16,164.46	\$1,242.73	(\$5,983.78)
BALANCING LOSSES	(\$42,678.12)	(\$20,531.82)	(\$12,009.59)	(\$9,216.33)	(\$31,136.04)	\$1,963.53	(\$1,841.38)
BALANCING CONGESTION	\$2,925.75	(\$7,745.39)	(\$18,520.02)	\$74,265.40	\$8,569.18	(\$33,379.97)	\$1,613.46
FINANCIAL IMPACT CHARGE	\$0.00	\$0.00	\$0.00	(\$1,596.36)	\$0.00	\$0.00	\$0.00
	14	15	16	17	18	19	20
DAM ENERGY	\$179,873.22	\$138,947.06	\$134,865.64	\$153,594.71	\$121,932.83	\$93,907.65	\$91,760.42
DAM LOSSES	(\$344,515.02)	(\$255,863.84)	(\$241,314.87)	(\$294,152.06)	(\$230,658.19)	(\$181,147.89)	(\$180,535.58)
BALANCING ENERGY	(\$8,020.19)	(\$17,176.05)	(\$19,378.23)	(\$19,431.42)	(\$8,138.81)	(\$21,893.90)	(\$4,510.32)
BALANCING LOSSES	\$895.98	\$34.51	\$240.80	\$7,458.47	(\$495.76)	\$5,081.96	(\$3,281.82)
BALANCING CONGESTION	(\$9,017.74)	(\$161.40)	\$9,021.84	(\$4,888.34)	\$29,339.44	\$7,749.95	\$5,138.52
FINANCIAL IMPACT CHARGE	\$0.00	\$0.00	(\$97.09)	\$0.00	(\$275.96)	\$0.00	\$0.00
	21	22	23	24	25	26	27
DAM ENERGY	\$116,030.67	\$111,292.31	\$120,061.60	\$133,435.65	\$145,900.10	\$138,269.56	\$157,864.18
DAM LOSSES	(\$228,753.23)	(\$211,779.01)	(\$230,017.31)	(\$254,462.69)	(\$281,694.42)	(\$263,933.46)	(\$291,877.32)
BALANCING ENERGY	(\$12,896.81)	(\$18,942.01)	(\$24,467.79)	(\$17,942.50)	(\$24,039.95)	(\$5,849.41)	(\$34,269.82)
BALANCING LOSSES	(\$14,278.74)	(\$154.19)	\$2,347.28	\$4,319.63	\$3,753.51	(\$2,539.10)	(\$11,637.04)
BALANCING CONGESTION	(\$4,272.52)	(\$6,656.97)	\$2,683.60	(\$226.63)	(\$7,642.33)	(\$3,133.04)	(\$13,776.17)
FINANCIAL IMPACT CHARGE	\$0.00	\$0.00	\$0.00	\$0.00	\$0.00	(\$571.62)	\$0.00
	28	29	30				
DAM ENERGY	\$184,112.78	\$177,682.99	\$146,641.22				
DAM LOSSES	(\$356,696.69)	(\$332,419.87)	(\$279,079.93)				
BALANCING ENERGY	(\$7,455.83)	(\$18,143.98)	(\$539.09)				
BALANCING LOSSES	(\$18,649.37)	(\$10,460.30)	(\$13,887.94)				
BALANCING CONGESTION	\$8,623.64	\$263,330.10	(\$14,196.23)				
FINANCIAL IMPACT CHARGE	\$0.00	\$0.00	\$0.00				



SETTLEMENTS REPORT  
September 2020 Settlement Adjustment  
October 7, 2020

Weekly Settlement – Market Costs Analysis

	MONDAY	TUESDAY	WEDNESDAY	THURSDAY	FRIDAY	SATURDAY	SUNDAY
		1	2	3	4	5	6
ENERGY		\$6,191,007.37	\$7,358,007.08	\$9,592,146.28	\$8,460,758.74	\$4,731,723.58	\$4,691,188.53
TRANSMISSION SERVICE		\$722,501.41	\$835,226.59	\$1,065,969.45	\$1,011,168.82	\$599,746.53	\$602,476.03
UPLIFT		\$68,235.19	\$86,484.47	\$185,180.36	\$241,303.76	\$97,727.25	\$155,861.05
RESIDUALS		(\$157,537.09)	(\$201,508.42)	\$11,214.36	(\$97,791.98)	(\$141,591.53)	(\$138,963.86)
ANCILLARY SERVICES		\$1,114,080.58	\$1,171,160.11	\$1,193,442.96	\$1,164,882.39	\$1,023,639.08	\$1,022,014.72
TCC		\$423,304.94	\$855,297.43	\$1,040,212.46	\$1,159,984.60	\$380,918.37	\$343,636.79
	7	8	9	10	11	12	13
ENERGY	\$5,724,657.71	\$8,120,201.72	\$8,512,901.06	\$9,301,434.01	\$6,569,923.74	\$4,279,593.03	\$4,697,423.96
TRANSMISSION SERVICE	\$725,034.17	\$748,306.88	\$1,345,036.42	\$872,859.85	\$688,735.15	\$494,495.93	\$635,315.06
UPLIFT	\$134,942.31	\$182,350.49	\$131,120.98	\$200,134.08	\$197,010.04	\$223,324.15	\$158,193.27
RESIDUALS	(\$141,966.27)	(\$233,892.72)	(\$237,501.68)	(\$196,806.75)	(\$189,860.25)	(\$162,327.35)	(\$127,855.54)
ANCILLARY SERVICES	\$1,064,459.56	\$1,188,360.94	\$1,188,577.29	\$1,195,175.97	\$1,106,043.97	\$990,489.42	\$1,006,674.48
TCC	\$730,597.15	\$451,660.55	\$1,340,421.97	\$725,522.64	\$313,761.12	\$111,991.13	\$482,665.90
	14	15	16	17	18	19	20
ENERGY	\$6,269,251.87	\$4,547,684.87	\$4,741,215.33	\$5,411,023.68	\$4,063,759.06	\$2,910,699.53	\$2,789,575.54
TRANSMISSION SERVICE	\$718,912.93	\$513,599.11	\$704,171.70	\$652,685.95	\$546,735.49	\$423,637.53	\$423,212.64
UPLIFT	\$149,998.13	\$129,346.48	\$52,200.47	\$61,559.31	\$51,653.40	\$56,544.88	\$58,176.17
RESIDUALS	(\$180,337.66)	(\$134,494.48)	(\$116,869.41)	(\$158,843.10)	(\$128,204.52)	(\$98,521.65)	(\$91,428.78)
ANCILLARY SERVICES	\$1,068,248.17	\$1,000,991.84	\$1,016,249.67	\$1,054,765.43	\$1,027,663.33	\$943,338.98	\$921,320.33
TCC	\$703,871.94	\$182,205.32	\$942,041.05	\$363,972.47	\$199,526.07	\$75,397.69	\$94,722.61
	21	22	23	24	25	26	27
ENERGY	\$3,880,198.31	\$4,071,956.04	\$4,428,299.52	\$4,927,930.90	\$5,374,712.90	\$4,640,313.17	\$5,303,227.91
TRANSMISSION SERVICE	\$527,388.39	\$646,121.38	\$681,964.35	\$637,916.03	\$767,838.75	\$596,376.55	\$660,667.60
UPLIFT	\$44,846.68	\$55,087.02	\$64,923.72	\$98,414.16	\$129,429.60	\$58,767.02	\$44,107.16
RESIDUALS	(\$144,170.63)	(\$128,646.29)	(\$129,648.84)	(\$137,209.23)	(\$164,285.36)	(\$137,757.07)	(\$193,696.17)
ANCILLARY SERVICES	\$998,424.37	\$1,015,695.65	\$1,083,942.98	\$1,063,900.77	\$1,075,314.17	\$1,012,429.10	\$1,043,975.84
TCC	\$199,311.65	\$546,643.32	\$908,935.89	\$488,642.65	\$682,438.85	\$295,033.36	\$372,751.66
	28	29	30				
ENERGY	\$7,143,265.68	\$6,895,054.09	\$5,901,319.26				
TRANSMISSION SERVICE	\$878,479.83	\$978,480.95	\$978,947.31				
UPLIFT	\$154,374.92	\$147,738.96	\$38,469.94				
RESIDUALS	(\$190,065.47)	\$79,988.94	(\$161,061.97)				
ANCILLARY SERVICES	\$1,109,107.26	\$1,089,525.58	\$1,015,222.26				
TCC	\$495,679.06	\$993,429.62	\$1,037,400.17				



SETTLEMENTS REPORT  
September 2020 Settlement Adjustment  
October 7, 2020

Initial Settlement Adjustment – Market Costs Analysis

	MONDAY	TUESDAY	WEDNESDAY	THURSDAY	FRIDAY	SATURDAY	SUNDAY
		1	2	3	4	5	6
ENERGY		\$6,191,038.09	\$7,355,438.50	\$9,766,017.68	\$8,466,452.61	\$4,731,747.33	\$4,691,201.58
TRANSMISSION SERVICE		\$722,503.03	\$835,125.55	\$1,073,753.47	\$1,011,546.60	\$599,747.06	\$602,476.32
UPLIFT		\$68,235.19	\$86,484.48	\$185,180.35	\$241,303.76	\$97,727.25	\$155,861.05
RESIDUALS		(\$157,529.96)	(\$198,939.96)	(\$162,646.33)	(\$95,110.24)	(\$141,584.16)	(\$138,963.67)
ANCILLARY SERVICES		\$1,114,083.63	\$1,171,008.06	\$1,205,156.99	\$1,165,622.55	\$1,023,640.07	\$1,022,015.28
TCC		\$423,304.94	\$855,297.43	\$1,040,212.46	\$1,159,984.60	\$380,918.37	\$343,636.79
	7	8	9	10	11	12	13
ENERGY	\$5,724,686.56	\$8,117,623.70	\$8,512,925.55	\$9,301,178.45	\$6,571,493.06	\$4,279,479.36	\$4,697,445.74
TRANSMISSION SERVICE	\$725,036.05	\$748,214.25	\$1,345,037.18	\$872,860.54	\$688,816.76	\$494,489.21	\$635,318.42
UPLIFT	\$134,942.31	\$182,350.49	\$131,120.99	\$200,134.07	\$197,037.72	\$223,324.15	\$158,193.27
RESIDUALS	(\$141,959.85)	(\$231,295.66)	(\$237,506.55)	(\$196,530.96)	(\$186,413.21)	(\$162,213.47)	(\$127,877.31)
ANCILLARY SERVICES	\$1,064,463.09	\$1,188,221.84	\$1,188,578.68	\$1,195,177.28	\$1,106,806.37	\$990,479.31	\$1,006,679.55
TCC	\$730,597.15	\$451,660.55	\$1,340,421.97	\$725,522.64	\$313,761.12	\$111,991.13	\$482,665.90
	14	15	16	17	18	19	20
ENERGY	\$6,269,698.08	\$4,547,410.15	\$4,741,007.80	\$5,409,599.32	\$4,027,996.64	\$2,908,480.13	\$2,789,575.54
TRANSMISSION SERVICE	\$718,933.01	\$513,583.99	\$704,156.57	\$652,604.63	\$545,220.04	\$423,399.81	\$423,212.64
UPLIFT	\$150,001.55	\$129,346.48	\$52,200.48	\$61,559.31	\$51,653.40	\$56,544.89	\$58,176.17
RESIDUALS	(\$180,783.75)	(\$134,219.72)	(\$116,661.91)	(\$157,418.64)	(\$88,296.45)	(\$96,302.23)	(\$91,428.78)
ANCILLARY SERVICES	\$1,068,278.41	\$1,000,969.10	\$1,016,226.91	\$1,054,643.07	\$1,025,460.39	\$942,981.26	\$921,320.33
TCC	\$703,871.94	\$182,205.32	\$942,041.05	\$363,972.47	\$199,526.07	\$75,397.69	\$94,722.61
	21	22	23	24	25	26	27
ENERGY	\$3,880,198.31	\$4,069,549.50	\$4,428,043.13	\$4,925,598.44	\$5,370,528.13	\$4,640,313.17	\$5,303,227.91
TRANSMISSION SERVICE	\$527,388.39	\$646,017.70	\$681,952.47	\$637,801.22	\$767,653.75	\$596,376.55	\$660,667.60
UPLIFT	\$44,846.68	\$55,087.02	\$64,923.70	\$98,414.18	\$129,429.61	\$58,767.02	\$44,107.16
RESIDUALS	(\$144,170.63)	(\$126,239.87)	(\$129,392.62)	(\$134,876.54)	(\$163,723.09)	(\$137,757.07)	(\$193,696.17)
ANCILLARY SERVICES	\$998,424.37	\$1,015,539.62	\$1,083,925.09	\$1,063,728.01	\$1,074,990.35	\$1,012,429.10	\$1,043,975.84
TCC	\$199,311.65	\$546,643.32	\$908,935.89	\$488,642.65	\$682,438.85	\$295,033.36	\$372,751.66
	28	29	30				
ENERGY	\$7,143,265.68	\$6,895,054.09	\$5,901,319.26				
TRANSMISSION SERVICE	\$878,479.83	\$978,480.95	\$978,947.31				
UPLIFT	\$154,374.92	\$147,738.96	\$38,469.94				
RESIDUALS	(\$190,065.47)	\$79,988.94	(\$161,061.97)				
ANCILLARY SERVICES	\$1,109,107.26	\$1,089,525.58	\$1,015,222.26				
TCC	\$495,679.06	\$993,429.62	\$1,037,400.17				

